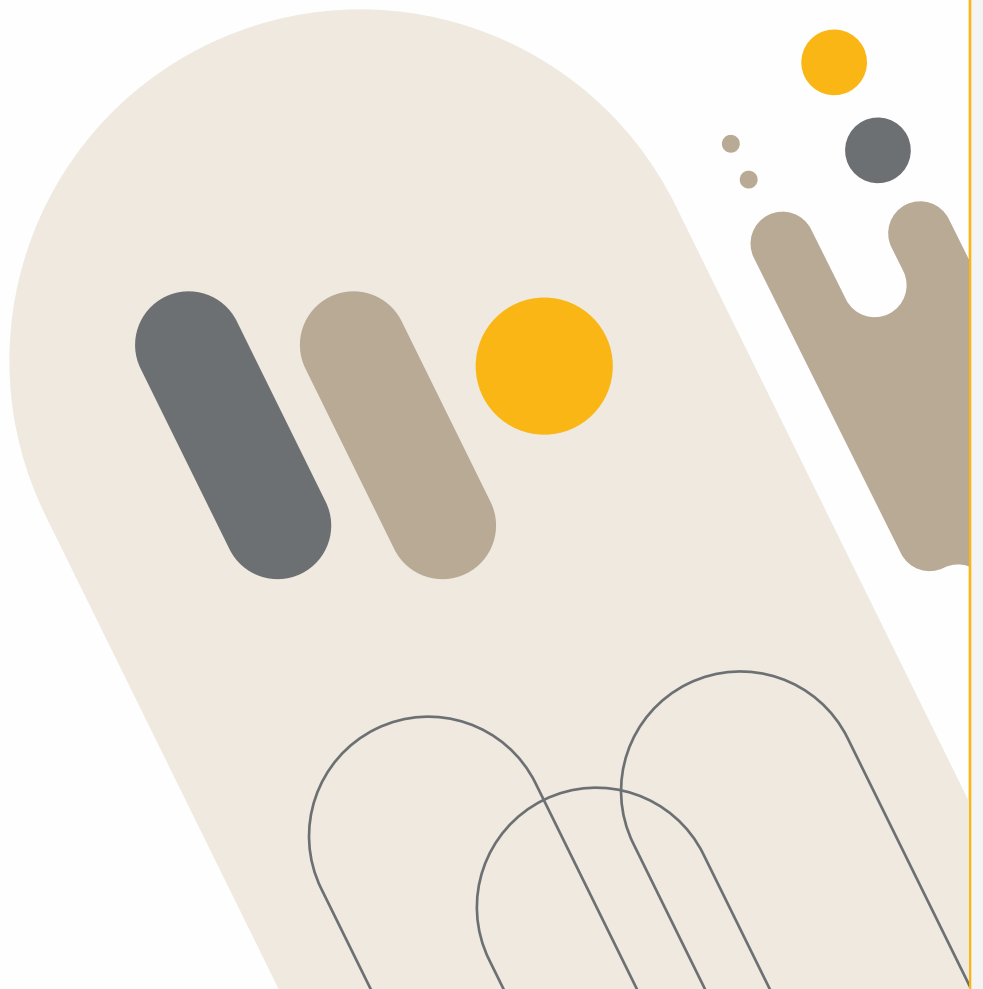
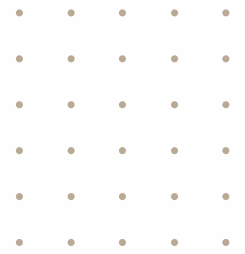


# POSTER **Presentation** **Guidelines**

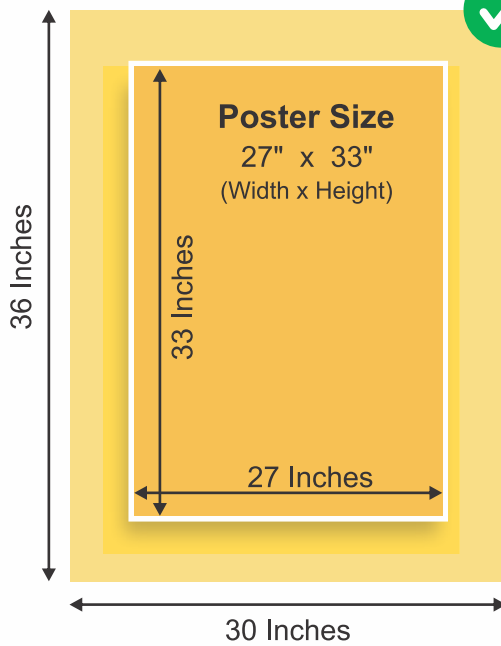


# Poster Presentation Guidelines (In person)

In order to efficiently communicate the results of your research, you are kindly requested to devote considerable effort in the design of your poster. Please pay attention to details by carefully following the instructions outlined



**Board Size** (30"x36" Inches)



**Poster Size**  
27" x 33"  
(Width x Height)

**Vertical / Portrait Format**

**Horizontal / Landscape Format is not acceptable**



**Horizontal / Landscape Format**

## Good Practices

- Make your title short to summarize the message of the research.
- Do not include references unless it is imperative.
- Use just one or two colors on a plain colored background.
- Put the conclusions in a prominent panel (preferably at the bottom of the poster).
- Poster text must be readable from 2 meters (with possible exception of references) and the title from 4-5 meters.
- Mostly to avoid capital letters except at the beginning of sentences and proper nouns.
- Use a black sans serif font, e.g. Arial or Gill Sans throughout.
- Use a bolder, larger typeface for the main titles and headings. It can be effective to use a different typeface for headings and subheadings.
- To emphasize body text, use a bold or italic font.
- Check the draft of your poster very carefully to ensure that there are no typographical or style errors.

# E-Poster Preparation Guidelines

The presenter must make sure that his/her e-poster should be clear enough in visual presentation and meets the below deadline criteria:

## Criteria:

### Title of the Poster

It is advised to keep the title of the poster same as in the submitted abstract. However slight modifications which do not change the idea of the abstract is permitted.

### Poster size and format

- Poster must be submitted in PDF format
- It is recommended to make your poster in PowerPoint (Landscape or Portrait) and then save it as a PDF before sending us via email
- Presenter must use the given PPT Template while preparing the poster

### Presenter's Information

The top of the poster should display, in the lettering of 18 Bold (Cambria), the following information:  
Title of your abstract, Name(s) of the Author(s) and Affiliation(s)

### Content of the Poster

- Make sure that the specific sections (such as the background, methods, results, and conclusions) are easy to locate in the poster
- Try to keep the text easy to read and concise. The poster should have a clear message, a logical layout and be easy to comprehend
- Avoid the use of full sentences and rather use short text in bullet point format
- Avoid using watermarks that may detract from the readability of your poster

### Illustrations

- Illustrations are the most important part of the poster and will attract the most attention. Colorful charts and graphs are the easiest to read Explanatory illustrations should be used instead of text whenever possible
- Use only static images and do not embed any videos or animation in your poster
- Try to utilize the space on your poster as creatively as you can to attract the audience and make sure that the images are easy to understand

### Lettering

- Kindly use both UPPER- and lower-case letters for general content, as all-capital text is difficult to read
- It is recommended to use font size 14 and Cambria font style for the content of the poster
- Make sure there is enough contrast between the color of the text and the poster's background  
Text and presentation should be in ENGLISH only

### Presentation of the Poster

- All the poster presenters will be given a 10-minute slot to present their research work and e-poster
- The presentation will be followed by a Q and A session where session chairs and attendees will be able to communicate with the presenter

If you have any questions, please contact Dr. Pawan Kumar Roy at [events@sciencealert.org](mailto:events@sciencealert.org)